



An Oshkosh Corporation Company

***STANDARD DUTY  
B.I.C. CARRIER  
HOSE TRACKING RETROFIT  
INSTALLATION INSTRUCTIONS***

5-377-000007

These instructions are intended to guide you through the installation of the Standard Duty BIC Hose Tracking Retrofit Kit (P/N 9-577-460132 for 19' decks and 9-577-460133 for 21' decks).

### **Remove Existing Hose Tracking System**

1. Roll the deck rearward until it is out of the holddown and tilt it up. Roll the deck completely forward and block the deck in this position so that you can work under it.

**Caution**

Make sure the deck is  
secured before working  
under it.

2. Turn off the truck and disconnect the flexible winch hoses from the steel lines coming from the winch and from the valve bank.
3. Disconnect the "subframe to deck" wiring harness that runs through the fire hose at the front-passenger's side corner of the deck, and at the rear of the truck frame.
4. Remove the winch hoses and wiring harness from the deck and subframe.
5. Unbolt and remove the galvanized hose tracking trays from the deck and subframe.
6. Remove the steel hydraulic lines extending from the winch orbit motor.
7. Remove any remaining fasteners, clips, and clamps that were used to secure the winch hoses, steel hydraulic lines, wiring harness, or galvanized trays. Be sure to remove the welded-on clips that were used to secure the wiring harness along the deck beam.

## Install New Hose Tracking System

1. Clamp the 3/16 x 4-13/32 x 16-1/4" plate on the bottom side of the deck per Figure 1. Using the plate as a template, drill (3) three 9/32" holes through the deck crossmembers and secure the plate using 5/16 x 3/4" self-tapping screws.

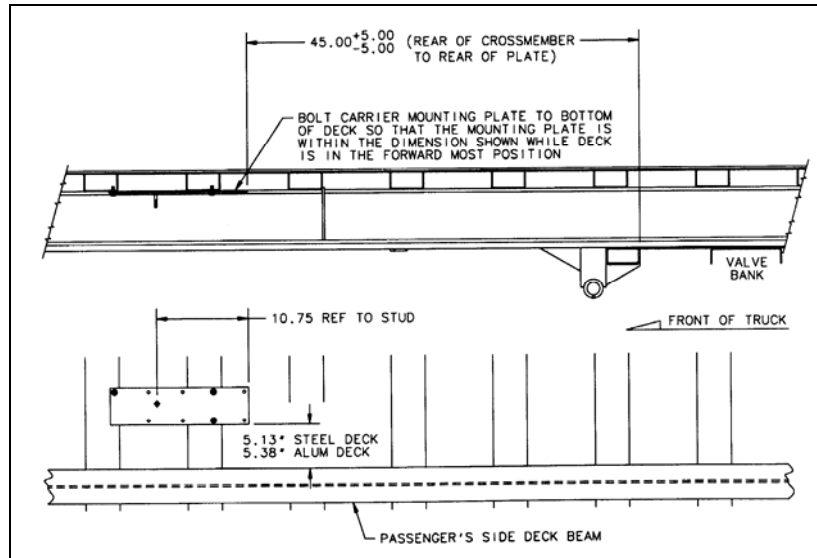


Figure 1. Plate Location

2. Clamp the new upper hose and tray assembly to the bottom of the deck. It should be positioned to the inside of the passenger's side deck beam as shown in Figure 2. It may be necessary to relocate the wiring harness that services the mid-deck marker lights on 21' decks. The rearmost hose clamp on the upper hose and tray assembly should be in-line with the stud on the plate installed in Step 1.

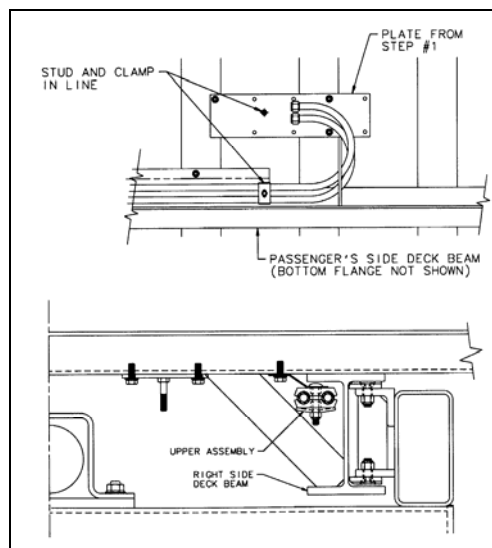
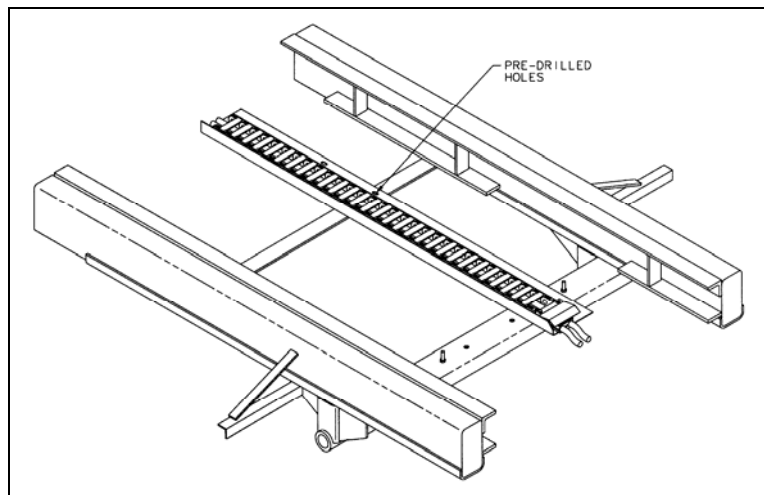


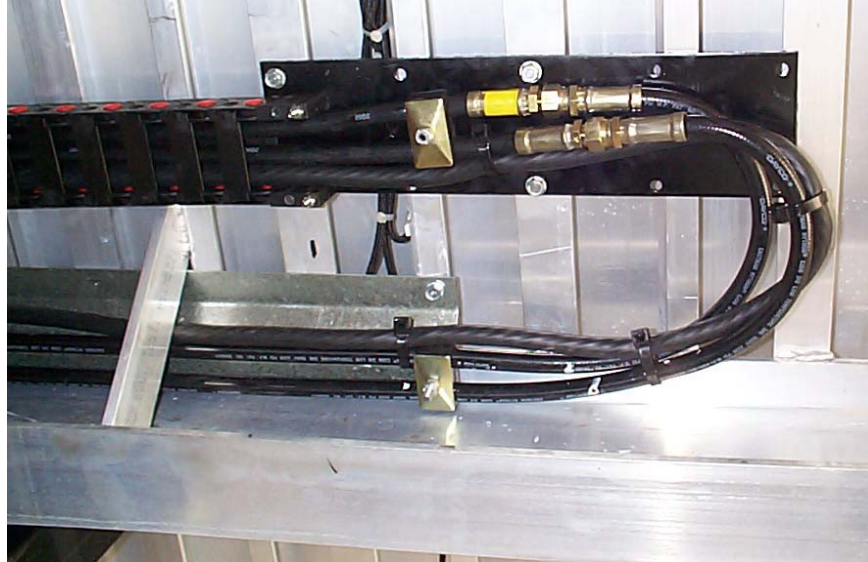
Figure 2. Upper Assembly Installation

3. Drill a 9/32" hole through the tray of the upper assembly at each deck crossmember and secure the hose and tray assembly to the deck using 5/16 x 3/4" self-tapping screws.
4. Place the lower assembly in the subframe as shown in Figure 3. The pre-drilled holes in the lower tray will line up with the existing holes in the subframe that were used to secure the old hose tracking tray.



**Figure 3. Lower Assembly Location**

5. Secure the lower assembly using (4) four 5/16 x 1" carriage bolts, flat washers, and locknuts. For 19' deck applications you will need to place a 1/4 x 1-1/2 x 5" spacer under the lower assembly at the front attachment point.
6. Connect the hoses from the lower assembly to the valve bank.
7. Connect the hoses from the upper assembly to the winch orbit motor.
8. Make a 180 degree loop in the front end of the cable carrier and secure it to the plate installed in Step 1 using (2) two #10 x 2" button head capscrews and locknuts as shown in Figure 4.
9. Secure the end of the winch hoses from the cable carrier to the stud on the plate installed in Step 1 using a hose clamp on the stud and a locknut as shown in Figure 4.
10. Adjust the position of the winch hoses in the upper assembly if necessary, create a 180 degree loop in the winch hoses and connect them to the hoses coming from the cable carrier as shown in Figure 4.



**Figure 4. Hose Connections**

11. Connect the wiring harness at the rear of the truck frame. Route the other end of the wiring harness along the winch hoses and make the connections at the front-passenger's side corner of the deck.
12. Tie strap the wiring harness to the winch hoses as it routes along the inside of the deck beam as shown in Figure 4.
13. Make any final adjustments necessary and make sure that all of the fittings are properly tightened.
14. Place the warning decal on the inside of the passenger's side deck beam at the front of the deck by the winch orbit motor.
15. Roll the deck forward and back several times observing the motion of the hose tracking system. Make sure that the cable carrier rolls smoothly and that the loop remains perfectly vertical. Also make sure that the hoses, wiring harness, and cable carrier do not catch or rub anything.