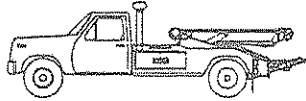
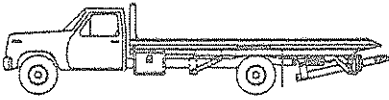
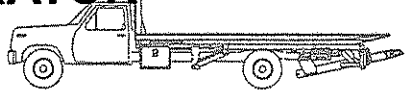
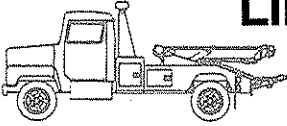


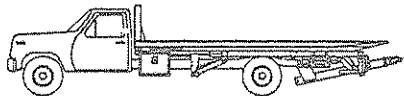
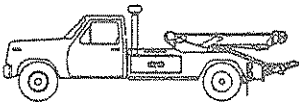
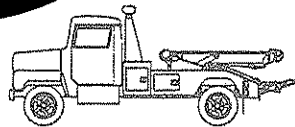
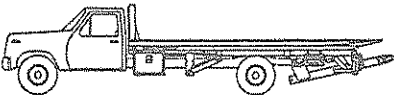
\$7.50



LIBERATOR



OPERATIONS, MAINTENANCE, AND PARTS MANUAL



JERR-DAN CORP.

1080 Hykes Road
Greencastle, PA 17225

Phone (717) 597-7111



FOREWORD

The purpose of this manual is to guide the owner and operator of the Liberator Tag Axle Assembly in the safe and proper operation and maintenance procedures.

Establishment of good operating habits and familiarity with the equipment and its capabilities combined with good judgement are essential.

Before attempting to operate the unit, carefully read all sections of this manual.



TABLE OF CONTENTS

Inspector's Certification	0.1
Delivery Prerequisite	0.1
Warranty	0.2
Safety	1.0
Decals	1.2
Operation	2.0
Maintenance & Lubrication	3.0
Lubrication Chart	3.1
Troubleshooting	3.4
Parts	
Tag Axle Installation	4.2
Cylinder 3320000049	4.3
Chevy Electrical System	4.6
Ford Electrical System	4.7
Hydraulic Components	4.10

Rev. _____

Date _____

(

(

(

INSPECTOR'S CERTIFICATION

I certify that this unit, Sales Order No. _____,
Serial No. _____, has been thoroughly
tested in accordance with the Jerr-Dan inspection procedure manual and is
free of defects.

Inspector's Signature

Date

DELIVERY PREREQUISITE

I, the customer/driver, have been instructed in the proper use of this roll
back body and am fully aware of the correct method of operation.

Customer's Signature

Date

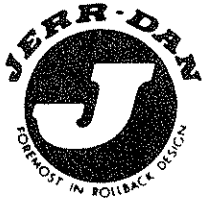
INVESTIGATION REPORT

.....
.....
.....

CONCLUSIONS

.....
.....

.....
.....



JERR-DAN

1080 Hykes Road, Greencastle, PA 17225
(717) 597-7111

LIMITED WARRANTY Coverage and Procedures

Like our wheel lift and car carrier products, Jerr-Dan warranty programs are designed for the long haul.

Whether you own a wheel lift or car carrier, you are assured that your equipment is of the highest quality, and is covered under this limited warranty.*

Our one-year unlimited mileage plan is offered for wheel lifts and car carriers. This warranty is designed for the most comprehensive protection of your specific equipment.

WHEEL LIFT:

The Jerr-Dan one-year warranty covers material and workmanship including the following:

- I. Body
- II. Substructure
- III. Wheel lift assembly
- IV. Wrecker boom assembly
- V. Winch and winch components (excluding cable)
- VI. Hydraulics
- VII. Electrical wiring assembly.

CAR CARRIERS:

The Jerr-Dan one-year warranty covers material and workmanship including the following:

- I. Deck
- II. Winch and winch components (excluding cable)
- III. Substructure
- IV. Hydraulics
- V. Electrical wiring assembly

Rev. _____

Date _____

Procedures for warranty coverage:

1. Contact Jerr-Dan for the warranty service center nearest you — Call 1-800-926-9666.
2. If there is not an authorized Jerr-Dan warranty service center nearby, find a convenient, qualified non-Jerr-Dan service center and send in their estimate of repair cost before any work is performed to:

Jerr-Dan Corporation
A Subsidiary of Durakon Industries, Inc.
Warranty Department
1080 Hykes Road
Greencastle, PA 17225

Be sure to include your daytime phone number.

3. Authorization for repairs under this limited warranty will be provided by telephone within 24 hours of receipt of valid warranty claims.
- *4. This outlines the Jerr-Dan One-Year Warranty Plan. For exact coverages, please consult your limited warranty and/or vehicle service contract. Coverage does not include damages caused by excessive abuse or consequential damages resulting from the lack of proper service, maintenance or need for repairs. All plans begin at original retail purchase date.



JERR-DAN

1080 HYKES RD., GREENCASTLE, PA 17225
(717) 597-7111

LIMITED WARRANTY

Manufacturer's Warranty. Manufacturer's sole warranty shall be the following, which Distributor shall make on behalf of Manufacturer by conspicuous notice in writing accompanying each contract or memorandum of sale:

1. **Warranty.** Jerr-Dan Corporation, ("Manufacturer") warrants each new product made by it to be free from defects in material or workmanship for one year from the date of initial sale, lease, rental, or other disposition of such product, and agrees only to repair or replace at its own expense, f.o.b. the place or places of manufacture, at manufacturer's option, any part or parts of the product found to be defective in material or workmanship, provided Manufacturer is notified of such defect or defects within the one year warranty period and given a reasonable time to correct the defect. In no case, shall the warranty extend to defects in materials, components, or services furnished by third parties. Defects caused by chemical action, or the presence of abrasive materials and defects arising following the operation beyond rated capacity or the improper use or application of any Products shall not be considered defects within the scope of the foregoing warranty. If any repairs or alterations are made or any parts are replaced during the period covered by any warranty above mentioned by other than an authorized Manufacturer's Distributor in accordance with authorized Manufacturer's service manuals or with other than parts, accessories, or attachments authorized by Manufacturer for use in its products, customer shall pay for all such repairs or parts without recourse against Manufacturer, and Manufacturer shall be relieved of responsibility for fulfillment of this warranty with respect to parts or components of all repairs, alterations or replacements so made. No claims for labor shall be considered unless authorized by Manufacturer.

2. **Disclaimer as to Consequential or Special Damages.** Under no circumstances shall Manufacturer be liable for any consequential or special damage which any person, firm, corporation, or other entity may suffer or claim to suffer or incur or claim to incur as a result of any defect in the product or in any correction or alteration thereof made or furnished by Manufacturer or others. "Consequential" or "special damages" as used herein includes but is not limited to costs of transportation, lost sales, lost orders, lost profits, lost income, increased overhead, labor and material costs and cost of manufacturing variances and operational inefficiencies.

3. **Maximum Liability.** The maximum liability of Manufacturer under the exclusive warranty set forth herein shall be the amount paid to Manufacturer by the vendor of the component with respect to the product to which such vendor warranty applies.

4. **Limitation of Liability.** The limitation of liability provisions herein shall apply to any and all claims or suits brought against Manufacturer including any claim based upon negligence, breach of contract, breach of warranty, strict liability or any other theories upon which liability may be asserted against Manufacturer.

Rev. _____

Date _____

5. Exclusive and Entire Warranty. The warranty constitutes Manufacturer's entire warranty as to the product and it is expressly agreed that the remedies of dealer and those claiming under dealer as stated in this warranty are exclusive. Manufacturer does not assume (and has not authorized any other person to assume on its behalf) any other warranty or liability in connection with any product covered by this warranty.

MANUFACTURER EXPRESSLY DISCLAIMS ANY AND ALL OTHER WARRANTIES OF ANY KIND WHATSOEVER AS TO THE PRODUCT FURNISHED HEREUNDER, INCLUDING BUT NOT LIMITED TO EXPRESS OR IMPLIED WARRANTIES AS TO MERCHANTABILITY, FITNESS FOR PARTICULAR PURPOSES SOLD, DESCRIPTION OR QUALITY OF THE PRODUCT FURNISHED HEREUNDER.

6. Notice of Occurrence. This warranty shall be void if, upon the occurrence of any incident involving any product made by Manufacturer, and resulting in any personal injury or property damage, customer shall fail to notify Manufacturer within 24 hours of such occurrence or permit Manufacturer audit representatives to have immediate access to such product and to all records of and within the control of the customer and/or distributor relating to the product and the occurrence.

7. Filing of Warranty Claim. Upon notifying the Manufacturer of a failure, the Manufacturer or its representative will verbally authorize and confirm by letter the repairs to be made. Verbal authorization will require the following information:

- A) Owner's name and telephone number.
- B) The dealer's name from whom it was purchased.
- C) The Manufacturer's unit serial number.
- D) Telephone number of the party making the repairs.
- E) The part numbers needed to make repairs.
- F) Owner to be informed of C.O.D. on parts, 50% to assure return of defective parts.

At this time, the Manufacturer will ship as soon as practical the parts needed to make the repair. Included with the parts will be the invoice for the parts and a Request for Warranty form, with the Warranty Return Tags.

The vehicle owner/dealer will complete the Request for Warranty form and the Warranty Return Tag marked "Return with Shipping Notice." Both documents should be attached to the shipping notice and returned to the Manufacturer by mail. The parts to be returned shall be tagged with the Warranty Return Tag (more than one part pertaining to the same warranty claim shall be identified with the same warranty claim number — see number on Warranty Return Tag). All parts under this claim shall be returned to the Manufacturer pre-paid for warranty evaluation.

Upon receiving the part or parts for warranty evaluation, the part will be inspected and tested. After being inspected and tested, the decision to honor or deny warranty claim shall be based on analysis of all available information.

When warranty is honored, the Manufacturer, will reimburse the owner/dealer in the amount agreed to by both parties.

If warranty is denied, the owner and distributor will be notified in writing of the decision and a full explanation for the decision will be given.

8. Manufacturer may at any time amend the foregoing form of warranty without prior notice.

Rev. _____

Date _____

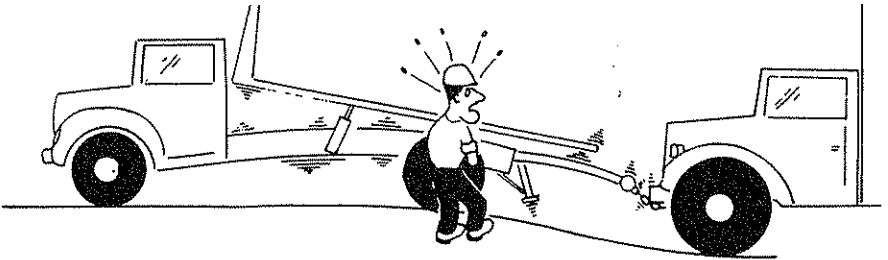


SAFETY

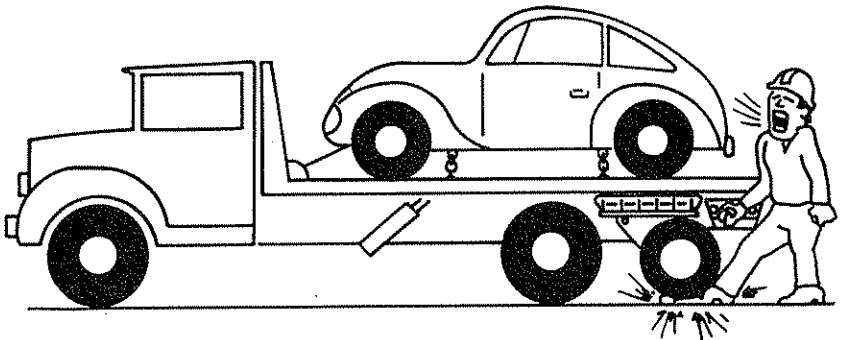
Safety is all-important when working with machinery. Accidents happen when established safety practices are not followed.

Read and practice all safety points listed in this manual. Safety is the prime responsibility of the operator.

1. Read operating instructions thoroughly.
2. Never exceed the rated capacity of the body or truck chassis, or use tow bar/wheel lift without a vehicle on the deck.



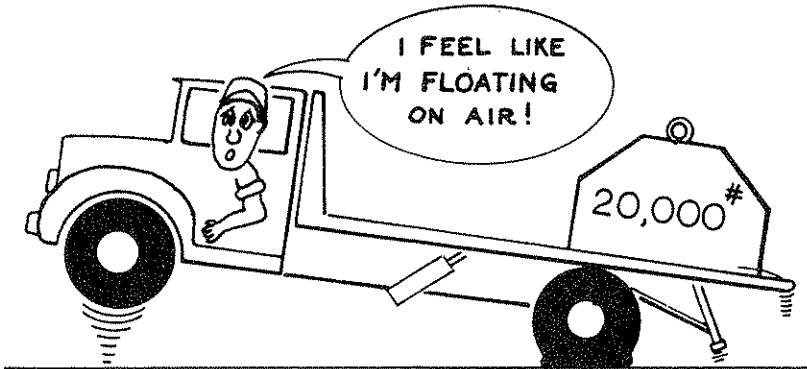
3. Never tilt the bed with the Liberator Tag Axle Assembly in the down position.
4. When lowering the Liberator Tag Axle Assembly, make certain there are no obstructions below the axles. Keep hands and feet away from moving components.



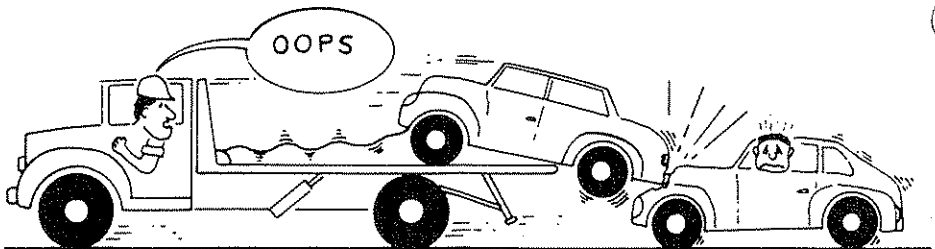
Rev. _____

Date _____

5. Never lower the Liberator Tag Axle Assembly where excessively uneven pavement or potholes may affect an even axle extension.
6. Distribute the load evenly on the deck. Do not concentrate the load on one section of the deck, to the rear of the truck axles, or use tow bar/wheel lift without a load on the deck.



7. Secure cargo to the deck at both the front and rear before the truck is driven.

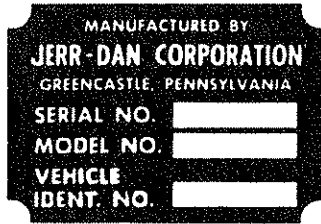


8. Observe all warning decals.
9. Keep alert. Do not be distracted during any operating sequences.
10. Make sure you are clear of oncoming traffic. Controls for the Liberator Tag Axle Assembly are located on both sides of the deck as well as in the cab.
11. Do not exceed tow bar/wheel lift ratings. Overloading can cause unsafe steering and braking conditions.

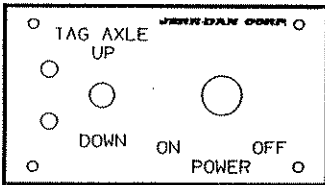
Rev. _____

Date _____

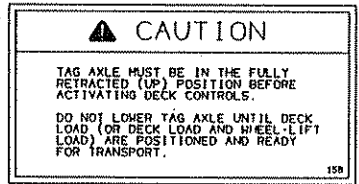
DECALS



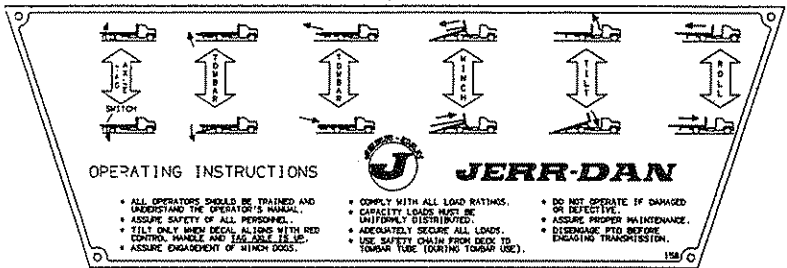
(SERIAL NUMBER)



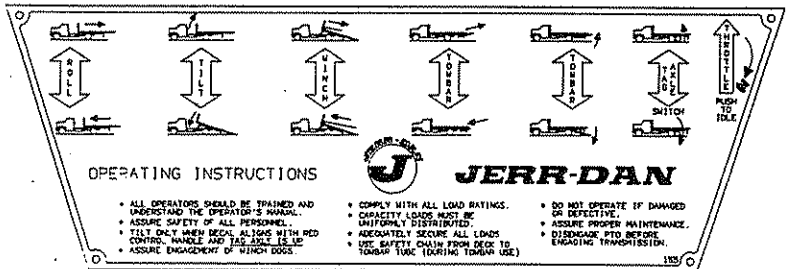
(CONTROL DECAL)



(AXLE CAUTION)



(STANDARD DECAL, RIGHT SIDE)



(STANDARD DECAL, LEFT SIDE)

Rev. _____

Date _____

(

(

(



OPERATION

A. Controls.

The up/down controls for the Liberator Tag Axle Assembly are conveniently located in the control boxes on both sides of the deck as well as in the cab of the truck. The control box inside the truck cab also includes two indicator lights, to indicate the axle position (up or down), and a battery disconnect switch, which is the main power switch for the Liberator Tag Axle Assembly. The electronic brake controller is also in the truck cab, mounted under the dashboard.

All operators must be trained and understand the contents of the operator's manual before operating any controls.

B. Axle Up/Down Operation.

When loading the truck, the Liberator Tag Axle Assembly should be in the UP position. The bed should not be tilted, nor should the tow bar/wheel lift be operated, if the Liberator Tag Axle Assembly is in the DOWN position.

1. Lowering the Liberator Tag Axle Assembly with a single vehicle on the truck carrier.
 - a. Turn the battery disconnect switch to the ON position.
 - b. Be sure the Liberator Tag Axle Assembly is in the UP position. This can be verified by observing that the green light, indicating UP, is lit.
 - c. Load the vehicle as per your operator's manual for the truck carrier.
 - d. When the vehicle is properly loaded and secured, lower the Liberator Tag Axle Assembly by holding down on the three-position (center off) toggle switch. If operating the Liberator Tag Axle Assembly from outside the cab, the switch farthest from oncoming traffic should be used.
 - e. Verify the Liberator Tag Axle Assembly is extended and loaded by observing that the red light, indicating DOWN, is lit.
 - f. Turn the battery disconnect switch to the OFF position to prevent accidental or unauthorized operation.
2. Lowering the Liberator Tag Axle Assembly with a single vehicle on deck and a second vehicle in tow.
 - a. Turn the battery disconnect switch to the ON position.

Rev. _____

Date _____

- b. Be sure the Liberator Tag Axle Assembly is in the UP position. This can be verified by observing that the green light, indicating UP, is lit.

CAUTION

Do not lower the Liberator Tag Axle Assembly before operating and loading the tow bar. Both vehicles must be loaded and secured before the Liberator Tag Axle Assembly should be lowered.

- c. Load both vehicles as per the operator's manual for the truck carrier.
- d. When the vehicles are properly loaded and secured, lower the Liberator Tag Axle Assembly using any of the three toggle switch controls.
- e. Verify the Liberator Tag Axle Assembly is fully extended by observing that the red light, indicating DOWN, is lit.
- f. Turn the battery disconnect switch to the OFF position.

NOTE

If a single vehicle is loaded on the deck and the Liberator Tag Axle Assembly is lowered to transport to the site of a second vehicle, the Liberator Tag Axle Assembly must be raised before the second vehicle can be loaded on the tow bar. Once the second vehicle is fully loaded, the Liberator Tag Axle Assembly can then be lowered again.

3. Raising the Liberator Tag Axle Assembly to unload a single vehicle from the truck carrier.
 - a. Turn the battery disconnect switch to the ON position.
 - b. Push up on the three-position (center off) toggle switch to raise the Liberator Tag Axle Assembly.
 - c. Verify the Liberator Tag Axle Assembly position by observing that the green light, indicating UP, is lit.
 - d. Turn the battery disconnect switch to the OFF position.

Rev. _____

Date _____

CAUTION

Do not attempt to unload the truck carrier or the tow bar without raising the Liberator Tag Axle Assembly.

- e. Unload the truck carrier as per your operator's manual for the truck carrier.
4. Raising the Liberator Tag Axle Assembly to unload a vehicle from the tow bar and a vehicle from the truck carrier.
 - a. Turn the battery disconnect switch to the ON position.
 - b. Push up on the three-position (center off) toggle switch to raise the Liberator Tag Axle Assembly.
 - c. Verify the Liberator Tag Axle Assembly position by observing that the green light, indicating UP, is lit.
 - d. Turn the battery disconnect switch to the OFF position.

CAUTION

Do not attempt to unload the truck carrier or the tow bar without raising the Liberator Tag Axle Assembly.

- e. Unload the truck tow bar and carrier as per your operator's manual for the truck carrier.

C. Brake Controller Setting.

1. Setting the level adjustment.

NOTE

To properly level the sensor, the truck must be parked on a level surface and power must be applied to the brake controller.

- a. Verify that the LED on the brake controller is lit and GREEN.
- b. Set the gain control knob (see figure 1) to maximum by rotating the knob clockwise.
- c. Depress brake pedal and hold.

Rev. _____

Date _____

- d. With the gain control knob set to maximum, rotate the sensor leveling knob (see figure 1) counterclockwise until the LED just starts to change colors from GREEN to RED.
- e. Slowly rotate the sensor leveling knob back in the clockwise direction just until the RED is no longer visible.
- f. Release brake pedal.

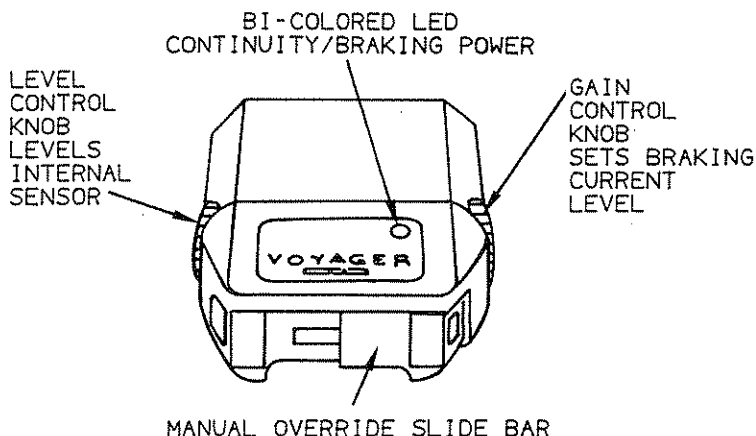


Figure 1. Brake Controller Controls

2. Setting the gain adjustment.

NOTE

The manual override slide bar is for setting the gain only and should not be used during normal operation.

NOTE

Level adjustment must be completed before the gain adjustment can be set and power must be applied to the brake controller.

- a. Rotate the gain control knob (see figure 1) such that the notch is at the "12 o'clock" position.
- b. Drive the truck at low speed, approximately 20 MPH on a hard, level, dry road surface.

Rev. _____

Date _____

- c. Slowly move the manual override slide bar (see figure 1) towards the maximum position.
- d. If the Liberator Tag Axle Assembly brakes do not lock up, increase the gain by rotating the gain control knob clockwise towards the "5 o'clock" position.
- e. Adjust until maximum gain control setting is achieved without wheel lockup.
- f. Release manual override slide bar and make a few slow speed stops with the foot brake. Assure Liberator Tag Axle Assembly brakes are not locking up.

NOTE

Gain control may need resetting to adjust for different load weights and road conditions.

Rev. _____

Date _____

(

(

(

MAINTENANCE AND LUBRICATION

A. General.

Jerr-Dan quality products are designed for years of service with little maintenance. This small amount of maintenance, however, is very important for durability and for safe operation of your Liberator Tag Axle Assembly.

Maintenance is an owner/user responsibility as neither the manufacturer nor the distributor can normally control this function.

Use only safe practices when maintaining this equipment. Never work underneath the Liberator Tag Axle Assembly with power applied to the circuit. Always turn power off at the battery disconnect switch before working in any pinch areas. Maintain a clean shop for safety. Clean up spilled hydraulic oil immediately.

Inspect the Liberator Tag Axle Assembly periodically for damage or evidence of pending failure. Damaged or broken parts should be replaced immediately. Never operate the Liberator Tag Axle Assembly when known to be defective or operating improperly. The cause of any binding or leakage should be determined immediately and the problem promptly fixed.

Cleaning every 6 months is recommended for normal highway operations, but this frequency will vary appreciably with the type of service. The two shoulder bolts (pivot points) and four cylinder pins should be lubricated with a multi-purpose grease every 2 months, again depending upon usage. See Lube Chart.

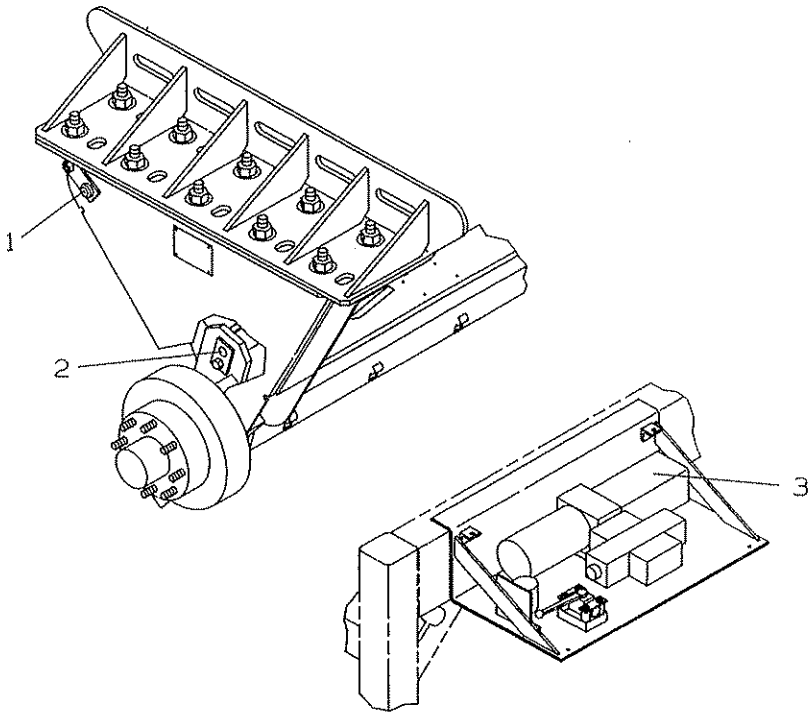
Check the hydraulic oil level bimonthly or after any leakage. Use Dextron II ATF. The proper oil level is indicated on the reservoir. Drain and fill reservoir annually (1000 operating hours). Always fill the reservoir with the Liberator Tag Axle Assembly in the UP position.

If a cylinder seal leaks, disassemble the cylinder and ascertain the cause of the leak. Small scores caused by chips or contaminated fluid can usually be worked out with fine emory cloth to avoid repetition of the trouble. Whenever any seal replacement is necessary, it is always advisable to replace all seals in that component. These seals are available in kits. Also, thoroughly clean all components before reassembly.

Lug nuts on Liberator Tag Axle Assembly wheels should be torqued every 50 miles for the first 200 miles, and as required thereafter. Torque lug nuts to 80-95 ft-lbs. Wheel bearings should be checked for wear every 6000 miles. At this time the bearings should be lubricated with a high quality wheel bearing grease. The seals should also be checked, and replaced if worn or torn. Brakes should be adjusted after first 200 miles of use, and every 3000 miles thereafter.

Rev. _____

Date _____



INTERVAL (HOURS)	REF. NO.	IDENTIFICATION	SERVICE	LUBRICANT	NO. OF POINTS
100 OR BI-MONTHLY	3	HYD. RESERVOIR	CHECK	DEXTRON II ATF	1
1000	1	CYLINDERS	LUBE	MPG	4
	2	SHOULDER BOLTS	LUBE	MPG	2
	3	HYD. RESERVOIR	DRAIN-FILL	DEXTRON II ATF	1

Lubrication Chart
Liberator Tag Axle Assembly

Rev. _____

Date _____

B. Maintenance Procedures.

1. Wheel Bearing Replacement.

a. Disassembly

1. Remove dust cap.
2. Remove spindle cotter pin.
3. Loosen and remove spindle nut and washer.
4. Remove brake drum and bearing assembly.
5. Remove outer bearings.
6. Remove inner bearing seal.
7. Remove inner bearings.

b. Reassembly

1. Assemble inner bearings.
2. Install inner bearing seal.
3. Install brake drum.
4. Assemble outer bearings.
5. Install spindle washer.
6. Install spindle nut and tighten until hub or drum can no longer be rotated.
7. Back spindle nut off until nut is loose enough to turn by hand.
8. Finger tighten spindle nut by hand without rotating hub or drum.
9. Install cotter pin. If cotter pin cannot be installed when nut is finger tight, back nut off to the nearest available slot where cotter pin can be installed.
10. Reinstall dust cap.

2. Brake Adjustment.

- a. With the Liberator Tag Axle Assembly in the UP position, check that the wheel and drum rotate freely.

Rev. _____

Date _____

- b. Remove the adjusting hole cover from the adjusting slot on the bottom of the brake backing plate.
- c. With a screwdriver or standard adjusting tool, rotate the starwheel of the adjuster assembly to expand the brake shoes. Adjust the brake shoes out until the pressure of the linings against the drum makes the wheel very difficult to turn.
- d. Then rotate the starwheel in the opposite direction until the wheel turns freely with a slight drag.
- e. Reinstall the adjusting hole cover.

Rev. _____

Date _____

TROUBLESHOOTING

PROBLEM	CAUSE	SOLUTION
Electric motor will not run	1. Battery disconnect switch is in the OFF position.	1. Turn switch to the ON position.
	2. Tripped circuit breaker.	2. Reset circuit breaker under hood of truck next to battery.
	3. Battery cables are not connected.	2. Connect battery cables
	4. Battery voltage too low.	3. Charge or replace battery.
	5. Burned out switch or wires.	4. Check switch and all connections and wires for continuity.
Motor runs but cylinders do not fully extend.	1. Low fluid level.	1. Check fluid level. Fill if necessary.
	2. Leak or blockage in system.	2. Check hoses, connections, cylinders, manifold, and pump for leaks or signs of blockage.
	3. Faulty check valve or relief valve.	3. Remove pump and return to dealer for servicing.
Axle lowers completely but drifts up when system is off.	1. Leak in system.	1. Check hoses, connections, cylinders, manifold, and pump for leaks.
	2. Faulty check valve.	2. Remove pump and return to dealer for servicing.

Rev. _____

Date _____

PROBLEM	CAUSE	SOLUTION
Axle lowers completely but red indicator light is not lit.	<ol style="list-style-type: none"> 1. Battery disconnect switch in the OFF position. 2. LED burned out. 3. Loose or broken wiring. 4. Faulty pressure switch. 	<ol style="list-style-type: none"> 1. Turn switch to the ON position. 2. Replace LED. 3. Check switch and all connections and wires for continuity. 4. Replace pressure switch.
Axle raises completely but green indicator light is not lit.	<ol style="list-style-type: none"> 1. Battery disconnect switch in the OFF position. 2. LED burnt out. 3. Loose or broken wiring. 4. Faulty pressure switch. 	<ol style="list-style-type: none"> 1. Turn switch to the ON position. 2. Replace LED. 3. Check switch and all connections and wires for continuity. 4. Replace pressure switch.
Lowered axle assembly will not raise.	<ol style="list-style-type: none"> 1. Electric motor not running. 2. Faulty check valve (electric motor runs). 	<ol style="list-style-type: none"> 1. Refer to "Electric motor will not run" above. 2. Break safety wire on override valve located beside hydraulic power unit. Manually turn valve open and soften cylinders to unload truck. Remove pump and return to dealer for servicing.
No power to brake controller (green LED not lit).	<ol style="list-style-type: none"> 1. Blown fuse. 2. Loose or broken electrical connection. 	<ol style="list-style-type: none"> 1. Check fuse. Replace 30 amp fuse if necessary. 2. Check wires and connections for continuity.
Braking too aggressive (brakes grab).	<ol style="list-style-type: none"> 1. Level adjustment improperly set. 2. Gain level set too high. 	<ol style="list-style-type: none"> 1. Set level adjustment so that only GREEN is visible in LED. 2. Readjust gain accordingly.

Rev. _____

Date _____

PROBLEM	CAUSE	SOLUTION
Brakes delayed.	1. Level adjustment improperly set.	1. Set level adjustment such that a dim RED is visible in LED.
	2. Gain level set too low.	2. Readjust gain accordingly.
Brakes locked.	1. Gain level set too high.	1. Readjust gain accordingly.
	2. Brake controller wires shorted to ground.	2. Check all wiring and connections for shorts.
	3. Brake shoes adjusted too tight.	3. Adjust brake shoes accordingly.
	4. Wheel bearing worn.	4. Check wheel bearings. Replace if worn.
	5. Out of round drum.	5. Remachine drum.
Lights in master switch box stay on with switch off.	1. Disconnect switch defective.	1. Replace switch.
	2. Faulty pressure switch.	2. Replace switch.
Circuit breaker keeps tripping out	1. Short in 600v cable harness	1. Repair or replace.
	2. Electric motor dragging.	2. Replace electric motor.
	3. Defective breaker.	3. Replace breaker.

Rev. _____

Date _____

(

(

(



PARTS

To order repair parts, call your nearest Jerr-Dan Distributor or call 800-876-1415 for further information.

Give Sales Order No., Serial No. and Model No. of the Liberator Tag Axle Assembly along with part number and description of part.

Rev. _____

Date _____

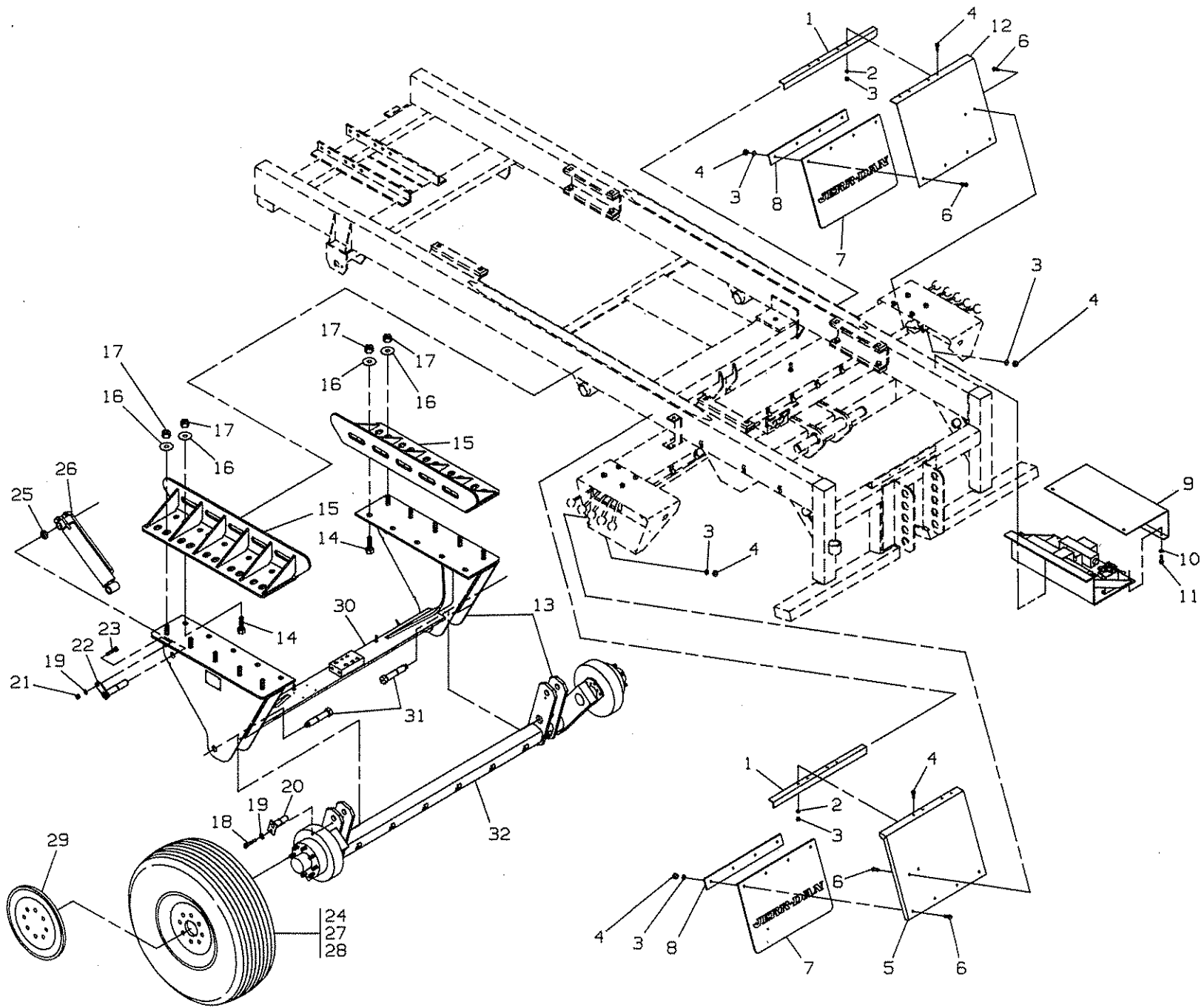
PARTS LIST — TAG AXLE INSTALLATION

Ref.No.	Part No.	Description	Qty.
1	4017000611	Angle, Mounting	2
2	7950150000	Lock Washer	14
3	7660150000	Hex Nut	14
4	7111150850	Hex Head Capscrew	4
5	4706001381	Plate, Mud Flap Mounting	1
6	7111151010	Machine Screw	10
7	7638000003	Mud Flap	2
8	4706001123	Back-up Plate	2
9	3560000003	Hood Weldment	1
10	7950140151	Flat Washer	2
11	7115140450	Hex Head Capscrew	2
12	4706001382	Plate, Mud Flap Mounting	1
13	3023000003	Tag Axle Assembly (Ford S/D)	1
	3023000002	Tag Axle Assembly (Chevy HD3500)	1
14	7118201650	Hex Head Capscrew	10
15	3178000179	Bracket Weldment	2
16	7949000009	Flat Washer	30
17	7660201603	Lock Nut	20
18	7115160650	Hex Head Capscrew	2
19	7950160151	Flat Washer	4
20	3691000110	Pin, Weldment	2
21	7660162301	Lock Nut	2
22	3691000108	Pin, Weldment	2
23	7115160850	Hex Head Capscrew	2
24	7960000015	Tire And Wheel Assembly	2
25	4831000045	Spacer	2
26	3320000049	Cylinder Assembly	2
27	7960000014	Wheel	2
28	7895000001	Tire	2
29	7002000251	Wheel Simulators	2
30	3636000040	Axle Mount	1
31	4120000009	Special Shoulder Bolt	2
32	7023000002	Rubber Torsion Axle Assembly (Chevy HD3500)	1
	7023000003	Rubber Torsion Axle Assembly (Ford S/D)	1

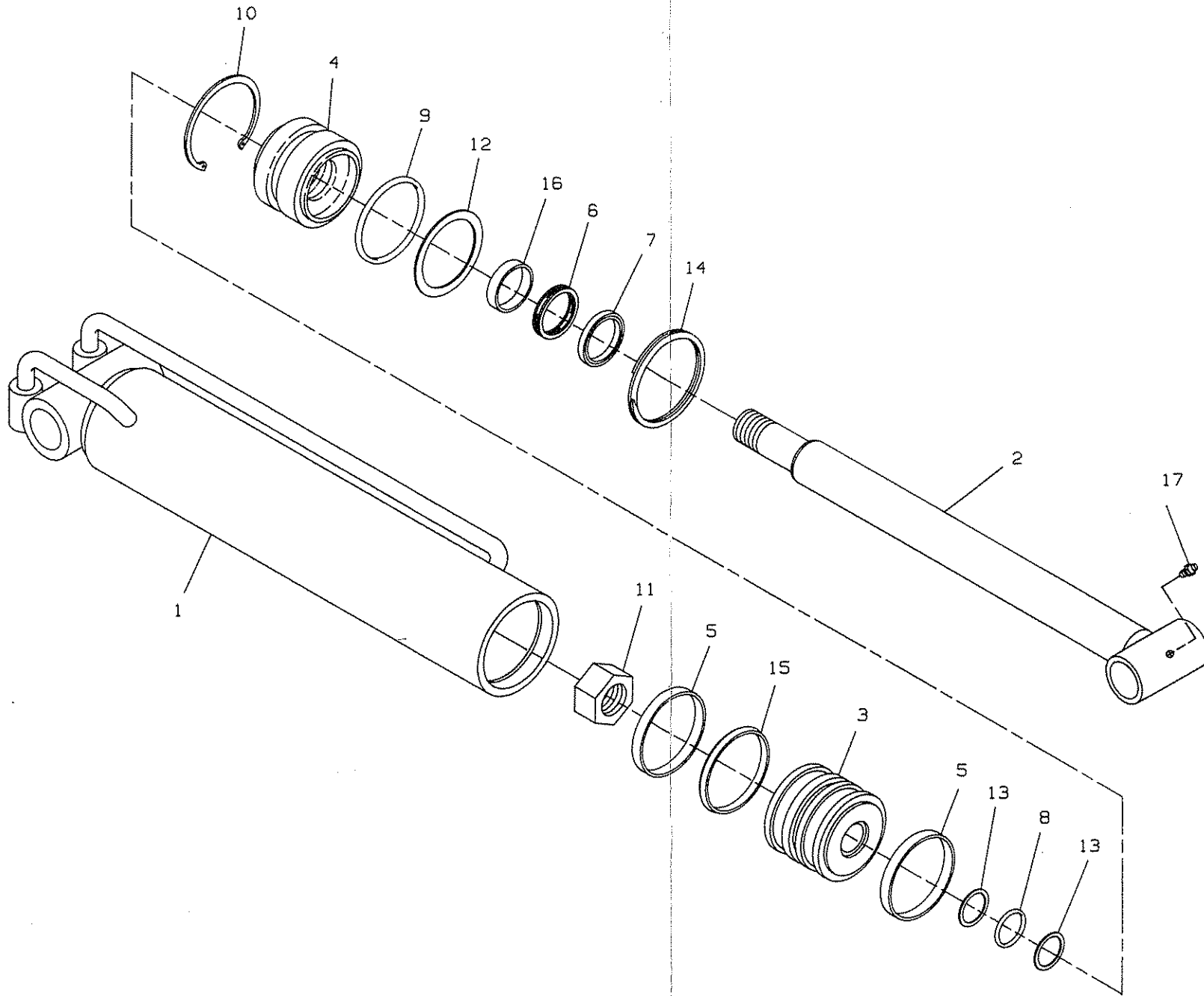
Rev. _____

Date _____

TAG AXLE INSTALLATION



CYLINDER 3320000049



PARTS LIST — CYLINDER 3320000049

Ref.No.	Part No.	Description	Qty.
1	3071000046	Barrel Weldment	1
2	3763000068	Rod Weldment	1
3	4698000011	Piston	1
4	4553000011	Head	1
5	7796000030*	Ring, Wear	2
6	7796000023*	Seal, Rod	1
7	7796000005*	Seal, Rod Wiper	1
8	7755214000*	"O"Ring	1
9	7755327000*	"O" Ring	1
10	7754000001*	Ring, Retaining	1
11	7660202031	Nut, Lock	1
12	7755327609*	Ring, Backup	1
13	7755214609*	Ring, Backup	2
14	7754000025*	Ring, Retaining	1
15	7796000026*	Seal, Piston	1
16	7754000036*	Ring, Wear	1
17	7440030000	Fitting, Grease	1

* Available only in service kit #7577250023

Rev. _____

Date _____

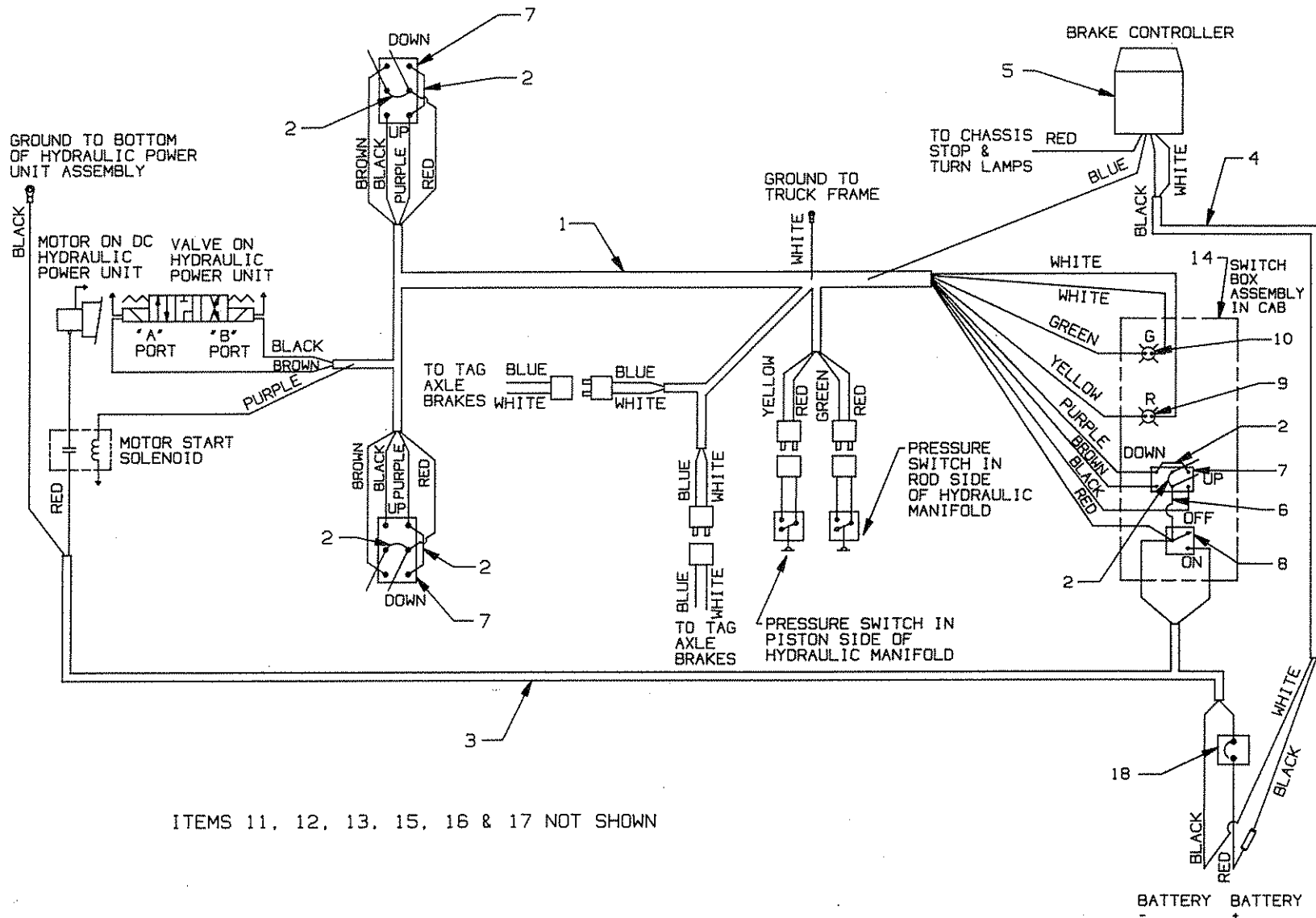
PARTS LIST — CHEVY ELECTRICAL SYSTEM

Ref.No.	Part No.	Description	Qty.
1	7552000050	Wiring Harness	1
2	3978000011	Wire Assembly	6
3	7552000051	Wire Harness, Hyd. Power Unit	1
4	3978000012	Wire Assembly	1
5	7295000021	Brake Controller #9030	1
6	3978000010	Wire Assembly	1
7	7870000029	Switch, Toggle	3
8	7870000026	Switch, Spst Battery Disconnect	1
9	7590000066	Light (Red)	1
10	7590000067	Light (Green)	1
11	7345001713	Connector, Butt 16-14	10
12	7115141250	Hex Capscrew	2
13	7950140151	Flat Washer	4
14	3870000002	Switch Box Assembly Liberator	1
15	7790100856	Screw Self Tapping	2
16	7493000007	Grommet	2
17	7660142601	Hex Nyloc Locknut	2
18	7346000019	100 Amp Circuit Breaker	1

Rev. _____

Date _____

CHEVY ELECTRICAL SYSTEM



ITEMS 11, 12, 13, 15, 16 & 17 NOT SHOWN

PARTS LIST — FORD ELECTRICAL SYSTEM

Ref.No.	Part No.	Description	Qty.
1	7552000050	Wiring Harness	1
2	3978000011	Wire Assembly	6
3	7552000051	Wire Harness, Hyd. Power Unit	1
4	7552000049	Wire Assembly	1
5	7295000021	Brake Controller #9030	1
6	3978000010	Wire Assembly	1
7	7870000029	Switch, Toggle	3
8	7870000026	Switch, Spst Battery Disconnect	1
9	7590000066	Light (Red)	1
10	7590000067	Light (Green)	1
11	7345001713	Connector, Butt 16-14	10
12	7115141250	Hex Capscrew	2
13	7950140151	Flat Washer	4
14	3870000002	Switch Box Assembly Liberator	1
15	7790100856	Screw Self Tapping	2
16	7493000007	Grommet	2
17	7660142601	Hex Nyloc Locknut	2
18	7346000019	100 Amp Circuit Breaker	1

Rev. _____

Date _____

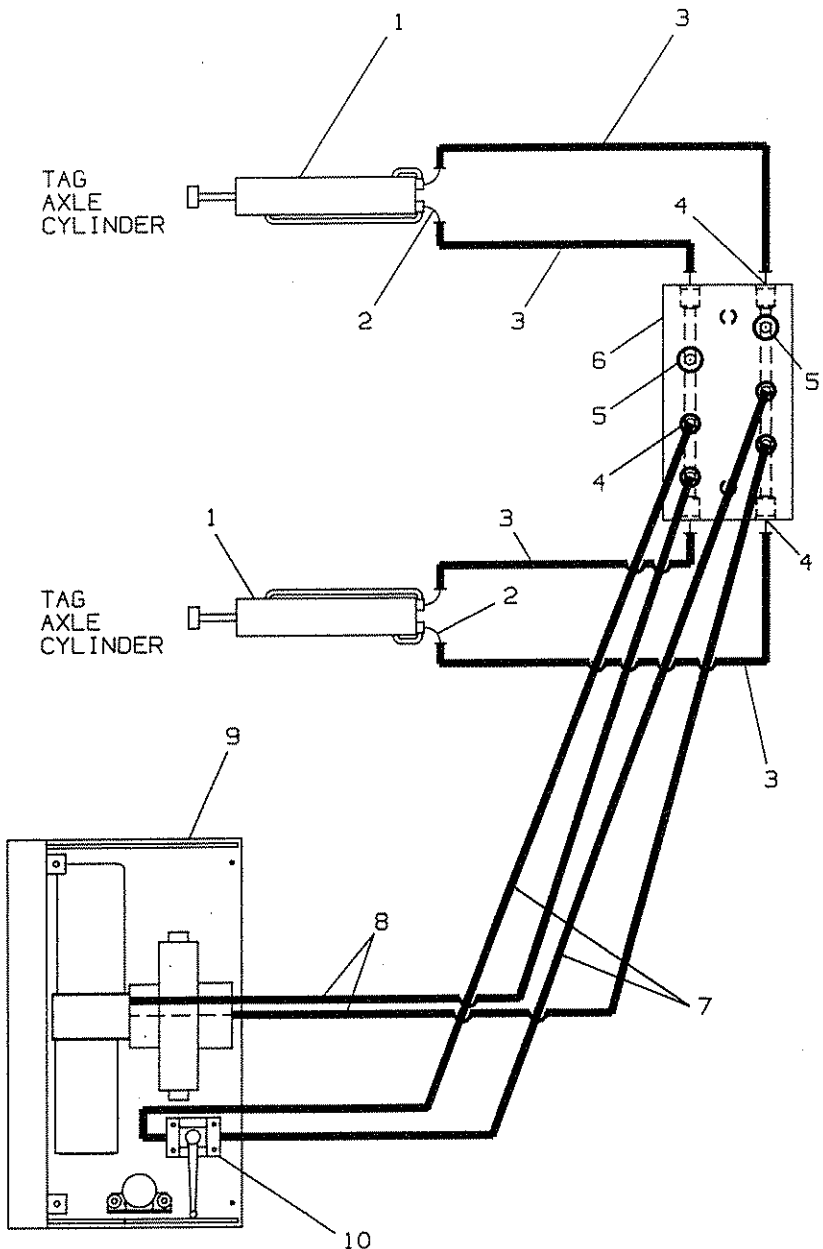
PARTS LIST — HYDRAULIC COMPONENTS

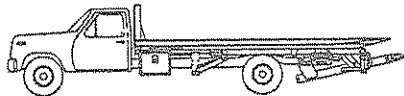
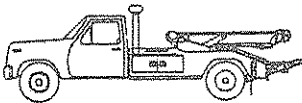
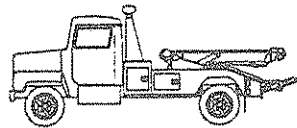
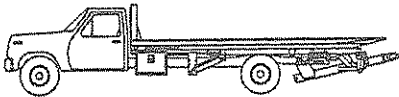
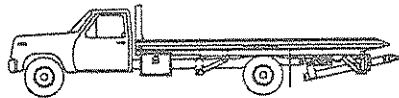
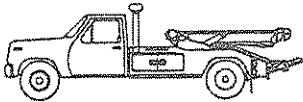
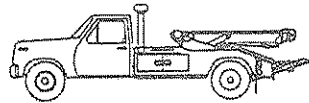
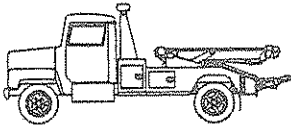
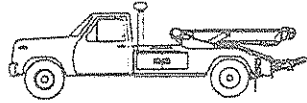
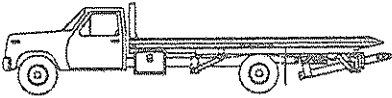
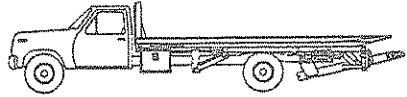
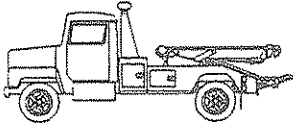
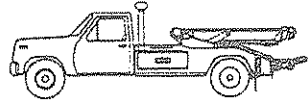
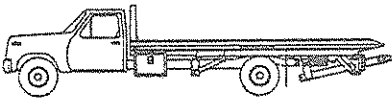
Ref.No.	Part No.	Description	Qty.
1	3320000049	Cylinder Assembly	2
2	7445040445	Elbow 90 MRG	4
3	4567210040	Hose Assembly	4
4	7445040443	Adapter Straight "O" Ring	8
5	7870000027	Switch, Pressure	2
6	4619000001	Manifold, Hydraulic	1
7	4567212062	Hose Assembly	2
8	4570000061	Hose Assembly	2
9	7724000020	Hyd. Power Unit	1
10	7935000091	Ball Valve	1

Rev. _____

Date _____

HYDRAULIC COMPONENTS





JERR-DAN CORP.

1080 Hykes Road
Greencastle, PA 17225

Phone (717) 597-7111